

ENMAT DIN Rail Modbus Bridge

- ♦ Easy to install and configure
- ♦ Modbus/RTU protocol and RS485
- ♦ Routing function
- ♦ DIN-Rail



The ENMAT DIN Rail Modbus Bridge is designed to connect one or more modbus slave devices (e.g. Modbus Smart Meter) with RS485 to the ENMAT Wireless Data Logger wirelessly.

The ENMAT Wireless Data Logger connected to the Gateway can communicate with Modbus slave devices eliminating any hard wired installation.

This communication link is completely transparent. Furthermore it can be a repeater and a parent device for battery powered sensors.

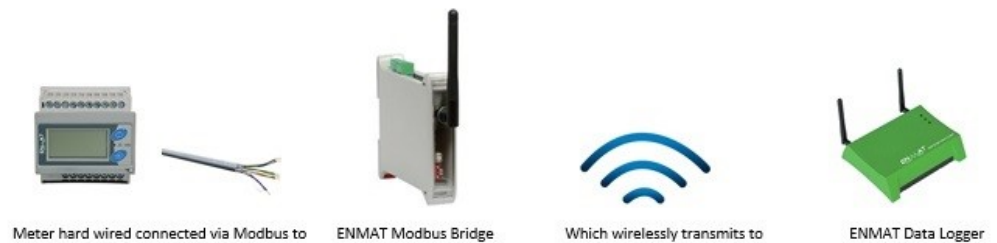
Visit ENMAT today for more information.

www.en-mat.com Email info@en-mat.com or call +44 (0) 161 448 7722

ENMAT DIN Rail Modbus Bridge

- ♦ RF power 1mW
- ♦ Reduces/removes Modbus Cabling
- ♦ Connects to Modbus Output Smart Meters

Communicates to ENMAT Cloud Server Software via Energy Data Loggers.



Visit ENMAT today for more information.

www.en-mat.com Email info@en-mat.com or call +44 (0) 161 448 7722